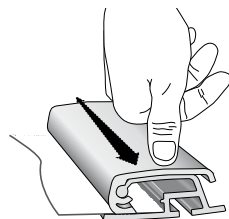
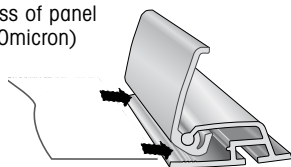
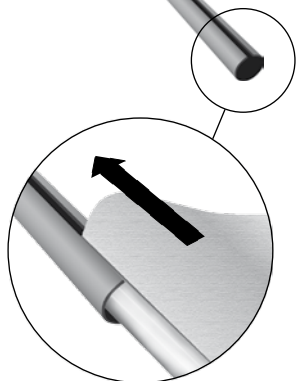


A**Mount the panel into the Snap Profile**

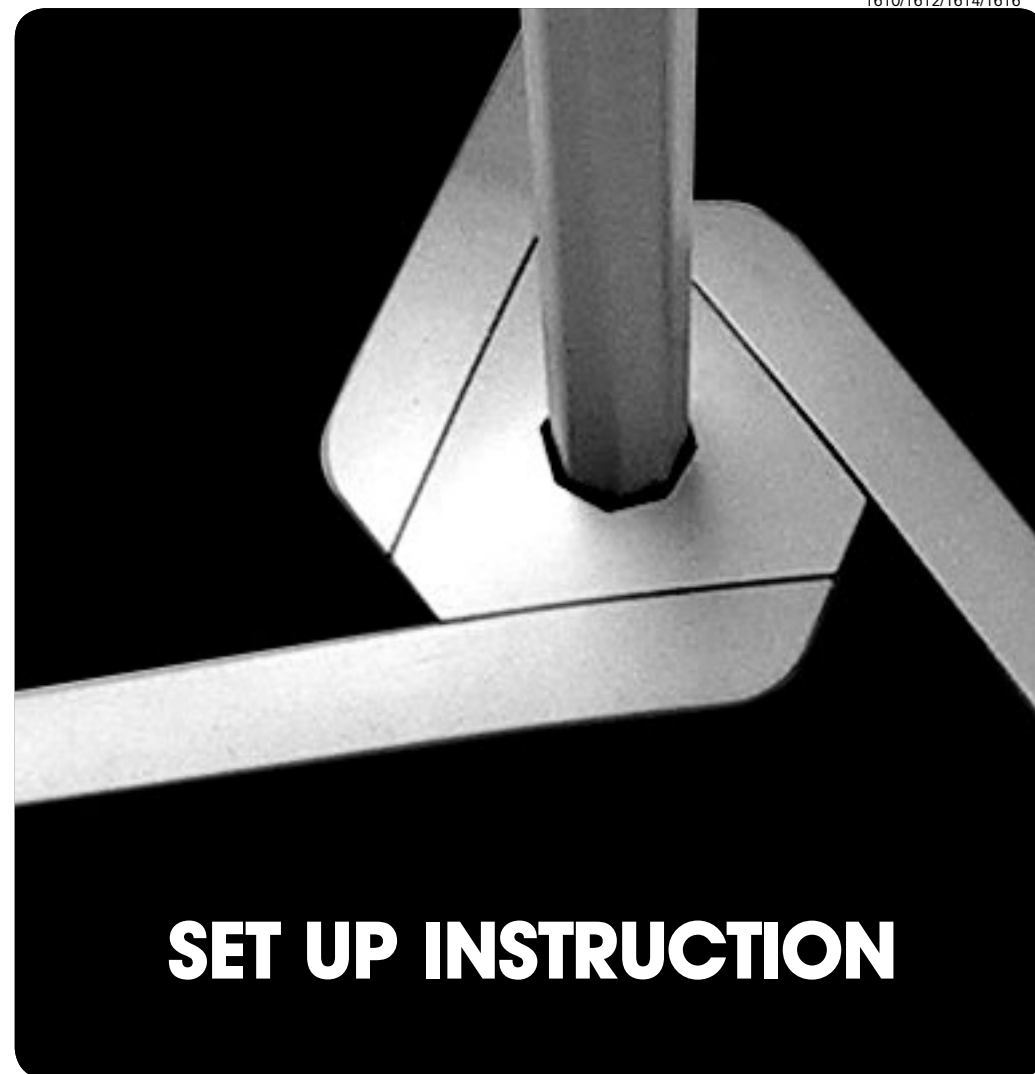
Max thickness of panel
0,5mm (500micron)

**B****Paper tube**

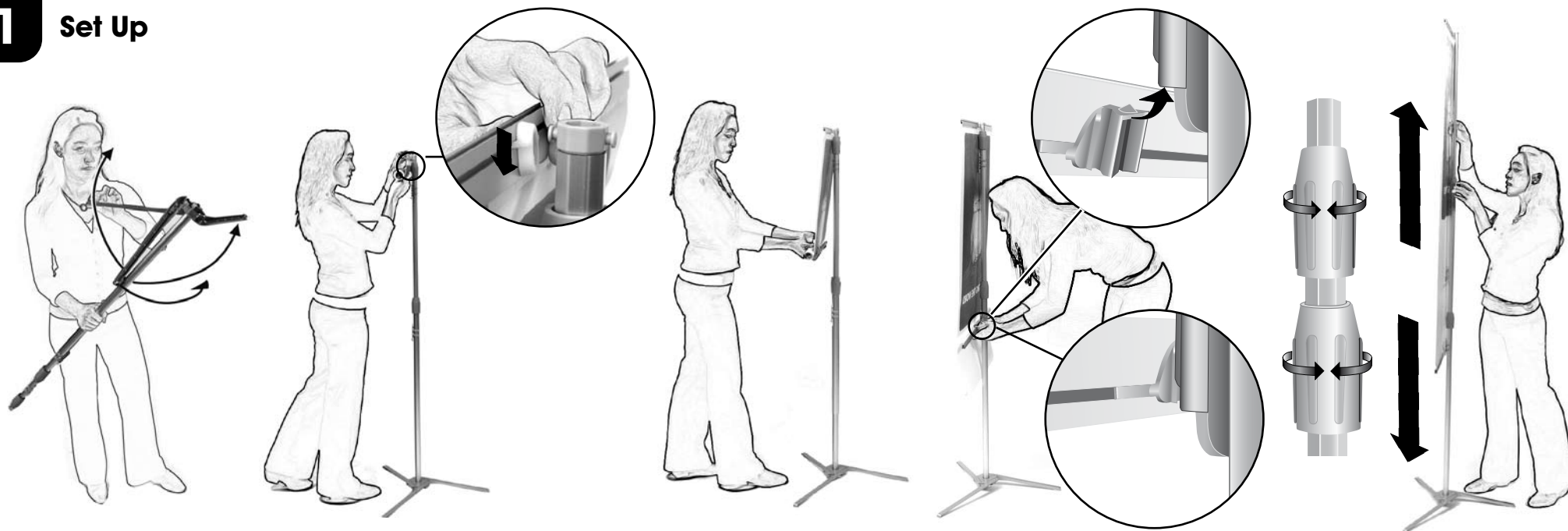
Slide the top profile with the graphic into the gap on the paper tube.
Wrap the rest of the graphic and profile around the paper tube.

**C**

Graphic No: 10543

**SET UP INSTRUCTION**

expolinc
POLE SYSTEM

1**Set Up****2****Take down**